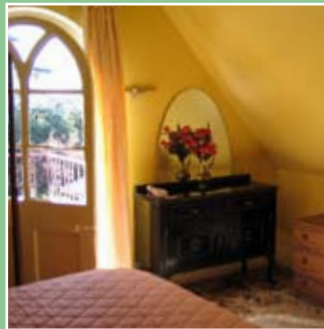


Scuba diving off the Tasman Peninsula
© John de la Roche*

WELCOME!

“The Cottage” in Swan Street is only a few minutes’ walk from the heart of North Hobart’s vibrant café and restaurant strip. It provides spectacular views of Hobart over the lovely garden from the upstairs balcony. This quaint and cosy, heritage-listed unit is ideal for couples or small families. Its central location makes it the ideal base to see Hobart and its surrounds.



FEATURES

- One or two-bedroom unit sleeping up to five people
- Double bedroom upstairs with an additional single bed and an additional queen bedroom downstairs that can be made available upon request
- Juliette balcony off the main bedroom upstairs with expansive views of Hobart and over the delightful garden
- Cosy lounge/dining area with a separate, light-filled sunroom
- Fully equipped kitchen
- Own laundry
- Walk to the end of the street for a variety of cafés and restaurants
- Only a few minutes’ drive from Hobart’s CBD.

More information

- All linen, including towels provided
- Undercover parking for one vehicle in the carport
- Check-in from 2pm and check out by 10am.

Further details

For more details please call Customer Service on **1300 653 322**.



The Hobart waterfront
© Don Stephens*

LOCALITY

As a destination itself or as a base from which to explore the south of Tasmania, Hobart is a great place to stay. History buffs will be drawn to the Female Factory and the Penitentiary Chapel Historic Site, all rich in convict lore. Richmond, just 30 minutes from Hobart, is steeped in history. It has the oldest bridge in Australia, the oldest gaol, and the oldest remaining Catholic church, St John’s.

For something more adventurous, try kayaking at Kettering, half-an-hour south of Hobart, or continue on south to the Tahune AirWalk and walk among the treetops. A further 90 minutes’ drive will take you to Hastings Caves and the thermal pool. If you enjoy bushwalking, there is a wide variety of walks; in fact there are too



Russell Falls
© Chris McLennan*

many to list. Some of the best walks can be found in Mt Field National Park and Tasman National Park near Port Arthur.

No trip to Hobart is complete without sampling the Salamanca markets, held every Saturday, although it is best to get in early to avoid the crowds. The shops and cafés around Salamanca and Battery Point are also worth a look for Tasmanian artefacts.



Cascade Brewery and Mount Wellington

EXPLORE TASMANIA

- Hastings Caves and Thermal Springs
- Tasmanian Devil Conservation Park
- Peppermint Bay Cruise
- Roaring Forties Ocean Kayaking
- Scuba diving at the Tasman Peninsula

LOCAL PRODUCE

- Salamanca Markets (Saturdays)
- Cascade Brewery Tour
- Cadburys Chocolate Factory
- Coal Valley Wineries

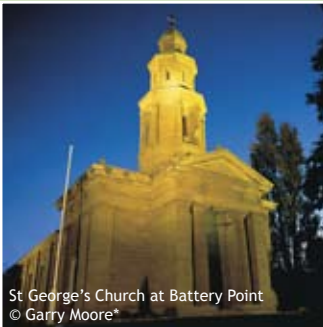
HISTORIC SITES

- Battery Point
- Port Arthur
- The Female Factory
- Penitentiary Chapel
- The Salmon Ponds in New Norfolk
- Richmond, home of Australia's oldest bridge
- The Oast House in New Norfolk

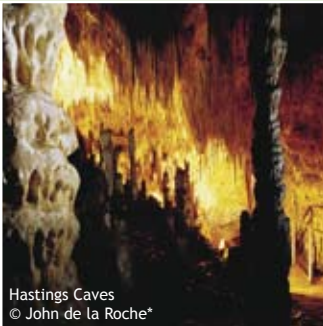
WALKS

- Tahune AirWalk
- Russell Falls in Mt Field National Park
- Waterfall Bay in the Tasman National Park
- Mount Wellington.

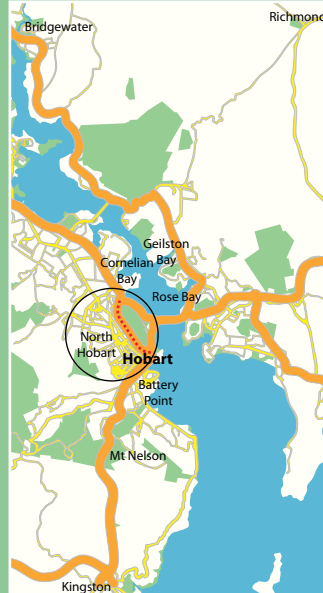
THINGS TO DO



St George's Church at Battery Point
© Garry Moore*



Hastings Caves
© John de la Roche*



Follow the Brooker Highway into North Hobart and turn off at Burnett Street.

THE COTTAGE
2/23 Swan Street
North Hobart, TASMANIA

P 1300 653 322
W www.waterviewapartments.com.au
E holidayhomes@apilifestyle.com.au

Hobart

THE COTTAGE



Your
escape awaits...