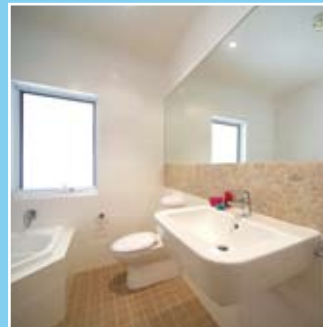




# WELCOME!

Magnificent architecturally designed townhouses offering stunning views over the sparkling water of Shoal Bay. Spacious and light, tastefully decorated interiors include floor to ceiling windows which open onto wide, generous balconies ideal for outdoor entertainment and relaxing. Tidemark townhouses offer holiday style and luxury at affordable rates.



## FEATURES

- Three bedrooms, fully self-contained sleeping six to eight people
- Queen bed in the main and rear bedroom (converts to two single if required), set of bunk beds and two occasional beds
- North-facing balcony with stunning panoramic views over Shoal Bay
- Second balcony off the main bedroom for a quiet retreat
- European appliances in the fully equipped kitchen
- Quality appointments throughout
- Three televisions
- Ducted air-conditioning
- Private court yard
- Relax in your own Spa bath.

## More information

- Undercover and off-street parking for boats and trailers
- Check-in from 2pm/ Check-out at 10am
- Linen and laundry provided.

## Further details

For more details please visit the website, [waterviewapartments.com.au](http://waterviewapartments.com.au) or call Customer Service on 1300 653 322.

## LOCALITY

Located on the shores of idyllic Shoal Bay, Tidemark is the ultimate in holiday style and refinement. Offering stunning views over sparkling waters, it truly is the perfect holiday home and holiday.

An easy 10 minute stroll from the front door will find you at the breath-taking Tomaree National Park lookout which provides incredible views up and down the beautiful coastline or back over Shoal Bay and beyond. Tomaree National Park is famous for bush walks, native flora and wild life and perfect for a family picnic or healthy outdoor exercise and activities.

Invigorating surf, natural salt water pools and rock pools full of wonder and delight can be found at many of Shoal Bay's unspoilt beaches.



Imagine pristine beaches without the crowds.

Families will love the local attractions including whale-watching and dolphin cruises. For the more adventurous there's jet-skiing, ocean kayaking, parasailing and diving. Drop a line in the Bay or try your hand at deep sea fishing.

There's an activity for every taste and everyone.



Shoal Bay Beach

### FAMILY FUN

- Fly Point Halifax Park Aquatic Reserve
- Dolphin and Whale watching tours
- Bike Hire
- Horse/Camel riding
- Skateboard park/Birubi Beach
- Port Stephens/Shoal Bay Learn To Surf School

### NATURE

- Tomaree National Park
- Hawkes Nest and Tea Garden
- Myall Lakes National Park
- Australia Walkabout Wildlife Park

### ADVENTURE

- Reef and game fishing trips
- Ocean Kayak tours
- Snorkelling and diving trips
- Parasailing/4WD tours
- Jet Boat Rides
- Boat/Kayak hire

### FAMILY BEACHES

- Shoal Bay Beach
- One Mile Beach, patrolled, refreshment kiosk
- Boat Harbour, great for little kids
- Birubi Beach (Stockton Beach). Patrolled at the Birubi Beach end
- Fingal Beach - patrolled Kiddies corner

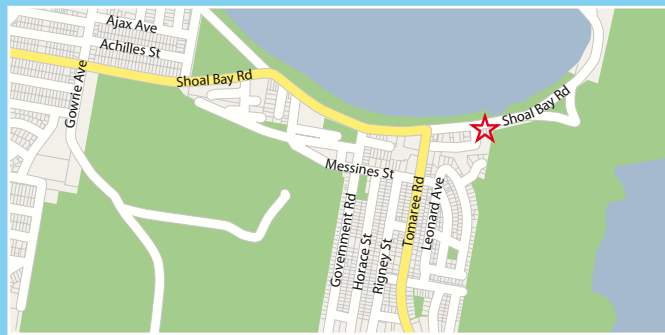
### SURFING BEACHES

- One Mile Beach, best surfed with a SE/NE swell
- Zenith Beach, best surfed with a NE swell
- Box Beach, best surfed with E/NE swell
- Fingal Beach, best surfed with S-E/SE swell.

## THINGS TO DO



One Mile Beach



Shoal Bay is a two-and-a-half-hour drive from Sydney along the F3 Freeway and Pacific Highway and a 40-minute drive north of Newcastle. Trains stop in Broadmeadow and Newcastle and bus services connect to Soldiers Point, Nelson Bay and surrounding villages. Newcastle Airport, located in Williamstown and only a 35-minute drive away, also provides direct flights to and from Sydney plus other capital cities.

**TIDEMARK**  
5 Shoal Bay Road  
Shoal Bay, NSW

**P** 1300 653 322  
**W** [www.waterviewapartments.com.au/tidemark](http://www.waterviewapartments.com.au/tidemark)  
**E** [information@apilifestyle.com.au](mailto:information@apilifestyle.com.au)

# Tidemark

SHOAL BAY



Your  
**escape** awaits...